



# Christmas crafts

*Treat your class to some festive fun making our wonderful Christmas crafts*

Christmas is such a busy time in the classroom, with school plays, carol concerts, fairs and the end of school party to organise, and that's on top of decorating the classroom and making sure the children leave with suitable cards and decorations to show to their parents. Take off some of the pressure this year with these creative Christmas craft ideas, designed to be fun and absorbing, while offering scope for personal touches.

The following projects can be created as shown, or used as the basis for a simpler or more complex activity, depending on time available, the ability of your class and other topic areas covered. Each of the projects use materials that are common in a classroom cupboard such as coloured paper, thin card, glitter, felt and fabric scraps. Some of the items will be readily available in craft stores, such as pompoms, pipe cleaners and papier-mâché boxes. You will need scissors, all-purpose glue, ruler, pencil, needle and thread for these activities.

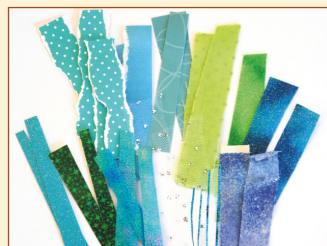
## 1. Winter sky Christmas card

This sophisticated Christmas card is simple enough for children to work on independently. The foreground landscape is created from white felt. Adding glitter to the felt adds a nice finishing touch, but can be difficult to use without some supervision. Ready-mixed glitter glues give a lovely effect and generally control the mess, but they must be left for at least three hours to dry fully. Alternatively, use a glue pen available from stationers and craft stores. It looks and works like a regular marker pen, but contains a pale blue glue and is a lot less messy and far more effective than using PVA. Provide a glitter station with a large shallow sided baking tray so that the glitter remains in just one location to limit the mess.



### You will need:

- Photocopiable 1, 'Christmas crafts templates' (see [www.resource-bank.scholastic.co.uk](http://www.resource-bank.scholastic.co.uk))
- scraps of coloured and patterned papers
- fabric and ribbon scraps
- thin white card
- white glittery, or plain white, felt
- glitter glue or a glue pen and glitter
- all-purpose glue
- scissors.



**1** Prepare strips of coloured and patterned paper and fabric, each roughly 8cm by 1cm. Use a wide variety of shades of blues, turquoises and lime greens.



**2** Cut a piece of white card roughly 7cm by 12cm. Starting at the top or bottom, use glue to attach the strips of paper and fabric to the card. Overlap the strips, so

that a thin line of each strip is visible. Don't worry about lining the strips up neatly; it's more effective if they are varied.



**3** Using the templates on Photocopiable 1, 'Christmas crafts templates', cut out the two hills and two trees from white glittery or plain white felt. Add lines of glitter glue

to the top edges of the hills and lines to represent the branches on the trees.



**4** When the glue is fully dry, trim the card with the paper and fabric strips to 5cm by 7cm. Fold a piece of A5 card in half and attach the decorated panel. Glue the hills and trees in position (see image for positioning).

## 2. Rudolf gift box/tree decoration

This cute reindeer can be used as a table decoration, gift box or tree decoration with the addition of a hanging loop. Rudolf's extravagant antlers are simply made from two pipe cleaners. The base of Rudolf is an oval papier-mâché box available from all good craft stores. (Other shaped boxes can be used, but the templates would need to be adjusted as necessary.)

This activity involves some simple sewing: a running stitch to gather and a whipping stitch to attach the ears and antlers. Alternatively, glue could be used, just provide a bag of pegs to hold the felt in place around the box lid sides and when covering the nose lining to hold the felt while the glue dries. A couple of stitches may be needed to firmly attach the antlers.



### You will need: (per child)

- an oval papier-mâché box, 9cm x 6cm
- two brown pipe cleaners
- one red pompom
- brown felt
- red ribbon
- black foam, felt or card
- white card
- white pen
- pink chalk
- brown thread
- green poster paint
- all-purpose glue
- sewing needle
- paintbrush
- scissors.



**1** Using the templates provided on Photocopiable 1, 'Christmas crafts templates', cut out one head, one nose and two ears from brown felt and one nose lining from thin card. Cut two eyes from black card, foam or felt. Put these to one side to be used later (see step 5).



**2** Sew a running stitch around the head and nose pieces about 5mm from the edge. Place the head in the box lid and glue in place. Pull up the stitches around the box sides to gather up the fabric and sew off tightly. Repeat with the nose piece and glue it to its lining. Again, pull up the stitches as you do and sew off tightly.



**3** Bend two pipe cleaners in half as shown with a flat section in the middle. Holding the flat section, bend one set of antlers forward and one backwards.



**4** Next, fold the ears in half and sew a couple of small stitches on the fold so that the small crease is retained in the centre. Stitch on the ears and antlers.



**5** Glue the nose fabric template to the head, and glue the red pompom in position. Draw a white dot on each eye using a white pen. Glue in position and use pink chalk to colour the cheeks and ears lightly.



**6** Glue a piece of ribbon around the edges of the box lid. Paint the base of the box using green poster paint and leave to dry fully, before placing the lid on the box. ▶



### 3. Gingerbread house/advent village

Allow each child to make and decorate their own gingerbread house box and create a complete winter village! To create an advent calendar, simply add house numbers to each box, maybe using 21a and 21b to allow enough numbers for each child in the class. The box lids will open so a small treat could be hidden inside the boxes, maybe a gingerbread person! For an extension activity, challenge children to create trees, landscape and a base for the full village to be displayed within.

The box net for the gingerbread house (see Photocopiable 2, 'Gingerbread house template') has been designed to be very quick and

easy to cut out. If you are short on time, and want something that the children can work on entirely without supervision when they have some free time during the day, then transfer the net onto thin white card and invite the children to decorate it with coloured pencils. They can then cut out and fold the net up into a house. For a more involved project, transfer the net onto brown card and invite the children to fold up the house with the guidelines on the inside. This allows a clean area on the outside that can be decorated with further pieces of cut card, glitter and pipe cleaners. The children can then assemble and add 3D decorations, including windows and a chimney, available on Photocopiable 3, 'Gingerbread house elements'. The steps below are instructions for this method.



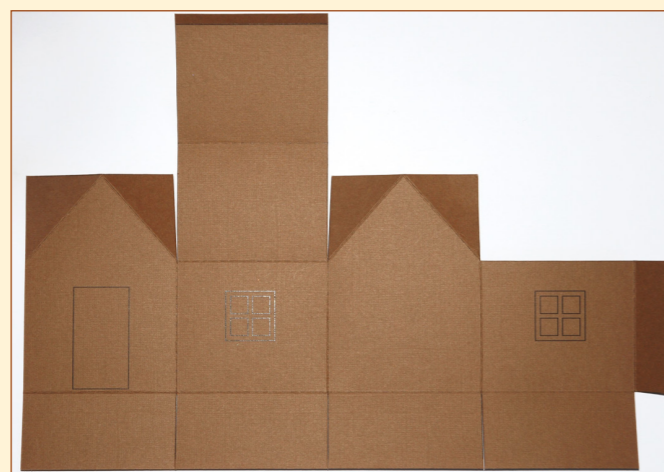
### ONLINE EXTRAS

All readers can visit our website to access the **Photocopiables**, 'Christmas crafts templates' that accompany these activities. There are more Christmas crafts ideas available online, too, along with cross-curricular Christmas activities and resources, including a beautiful Victorian Christmas scene poster.

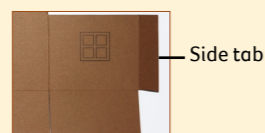


#### You will need:

- Photocopiables 2, 'Gingerbread house template' and 3, 'Gingerbread house elements'
- brown and white thin card
- scraps of coloured card
- green pipe cleaners
- white pipe cleaners
- red narrow ribbon
- scissors
- scoring tool
- all-purpose glue
- 3D sticky foam pads
- glitter
- glue pen.



1 Transfer the template on Photocopiable 2, 'Gingerbread house template' onto brown card. Cut and fold where indicated (dotted lines).



2 Glue the side tab to the inside of the house wall (point A) creating a square tube. Then, glue the bottom tabs

to each other to form the base of the house. Glue one side of the roof to two of the triangular tabs. Leave the other side unstuck so that the box can be opened.



3 Draw a scroll design on the front of the house above the front door using a glue pen, sprinkle with glitter and leave to dry fully. Alternatively, use glitter glue and leave to dry for at least three hours.



4 Transfer the shapes from Photocopiable 3, 'Gingerbread house elements' onto coloured paper and card and cut out. Each house needs a roof, two windows (with cills and shutters), a door, and a fascia either end.



5 Stick four blue squares to a large white square to make the window. Attach, along with the shutters and cill, to the house using 3D sticky foam pads. Add glitter. Repeat on the other side.



6 Glue the roof to the house. Add the fascia (one each side) using 3D sticky foam pads.

Add glitter to the door and attach in place on the house with 3D sticky foam pads.



7 Cut a 10cm piece of green pipe cleaner and create a ring to make a wreath. Tie with 20cm of narrow red ribbon and trim the ends. Add to the door. Bend a 10cm white pipe cleaner to create a plume of smoke as shown in the image above.



8 Cut out the chimney from Photocopiable 2, 'Gingerbread house template' and fold and score on the dotted lines as shown.



9 Glue the side tab, to make a short slanted square tube shape. Add, along with the smoke, to the roof.



10 Draw a glitter house number on a square of card and add. Decorate and add the snowman to the back of the house.

