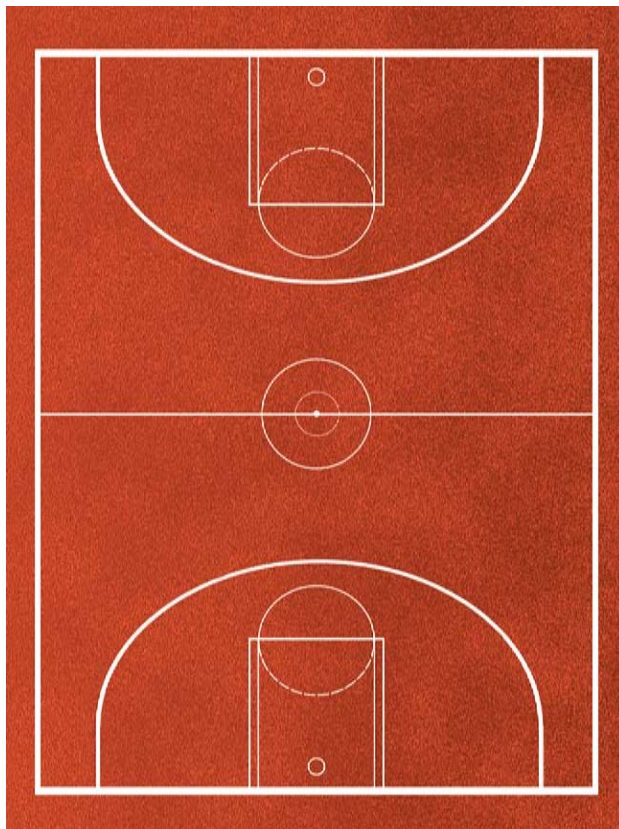
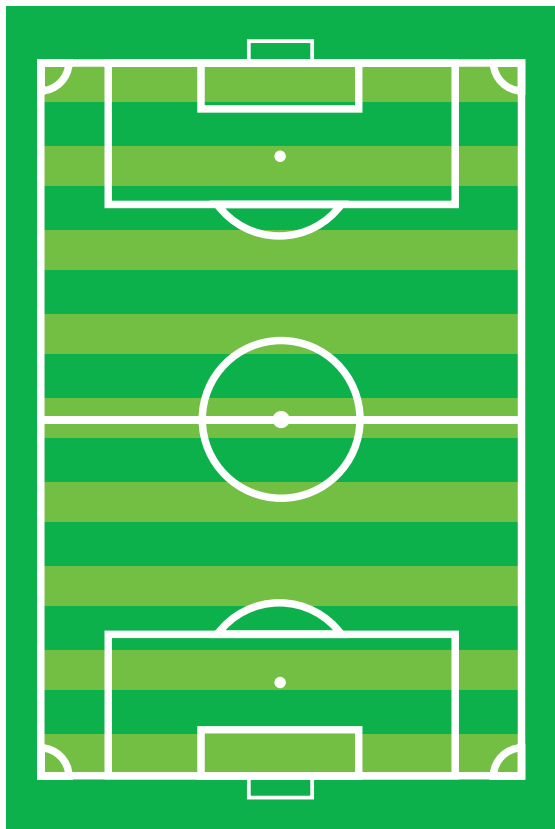


# On the sports field

- In the boxes below, list the shapes that you can see on the football pitch and basketball court. Then, note how many of each shape you can count.



**Football pitch:**

**Basketball court:**

- What kind of shape is a tennis court made up of? Draw a tennis court diagram in the box below.



# In the home

- Look at this wallpaper:

– What shape makes up the pattern?

\_\_\_\_\_

– How does this wallpaper design make you feel?

\_\_\_\_\_

– Which room in the house do you think it would be best suited to?

\_\_\_\_\_

– Why?

\_\_\_\_\_

– What would you change about the design?

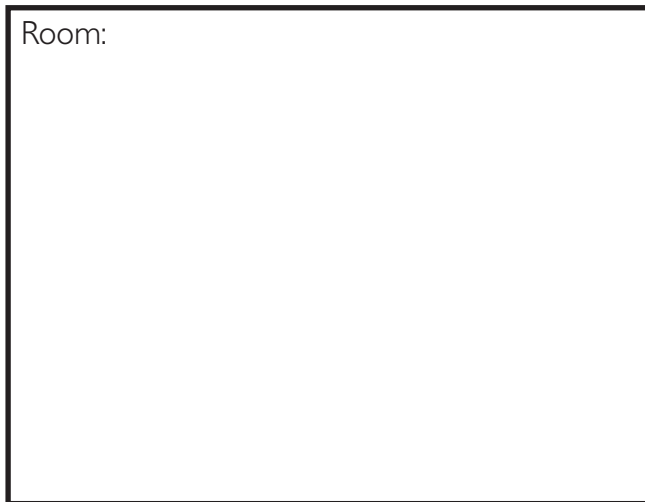
\_\_\_\_\_

\_\_\_\_\_

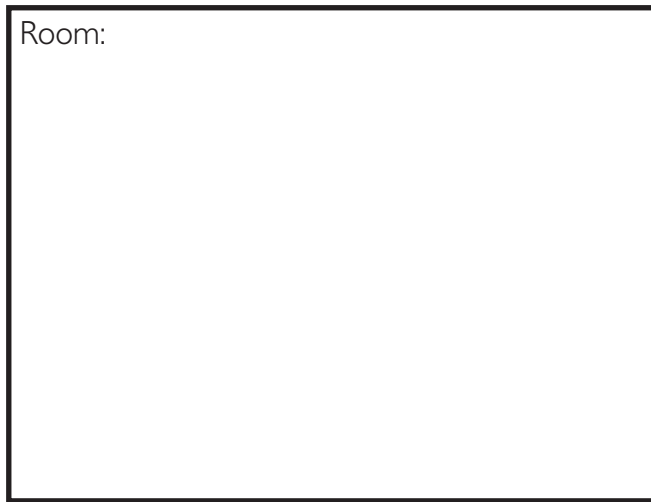


- Sketch two wallpaper designs for two different rooms in your house. Only use one kind of shape in each design. Write underneath what shape you picked and why.

Room:



Room:



# On the roads

What do you think these road signs mean? Write your guess underneath each one. Can you think of four more road signs? Draw and label them in the spaces below.



# On the roads: answers

Did you manage to guess all the road signs correctly?



Cycle route ahead



Uneven road



Zebra crossing



One-way traffic



Double bend



Low-flying aircraft or  
sudden aircraft noise



Turn right ahead



Falling or fallen rock



Parking



Slippery road



Other danger



Motorway

# Within the landscape

- The picture below shows the London city skyline at sunset, reflected in the River Thames. The shapes in this picture appear 2D but come from 3D shapes.



- What shapes can you see? Draw them in the box below.



- This picture shows another part of the London city skyline in daylight. You can see much more detail in this picture.



- What shapes can you see? Draw them in the box below.



- Which picture did you find easier to identify the shapes in? Why do you think this was?

---

---