

Red Nose Day crafts

Flip-flop card

Make this card for a fun Red Nose Day activity! This activity uses a craft knife and therefore the supervision by a teacher or teaching assistant is required.

You will need:

Photocopiable 2, 'Flip-flop card templates'; coloured card; glue; craft knife; scissors and decorating materials.

Step 1

Hand out **Photocopiable 2**, 'Flip-flop card templates'. (Note: Enlarging the templates will make it easier for children to complete the craft knife cutting steps or use scissors instead.)

Step 2

Mount the background, joke and punchline templates onto coloured card and cut out. Fold the background in half along the dotted line. Write your joke and punchline onto the templates and decorate them.

Step 3

Mount the pull tabs onto coloured card and cut out. Glue them together for strength and fold on the dotted line.

Step 4

Ensure the folded background template is the right way up with the front facing you. Then thread the short end of the tab up inside and through the slot on the left. Thread the longer tab end up through the slot on the right. Glue the background piece together along the top and bottom edges only.

Step 5

Where the small end of the tab pokes up through the left slot, fold over to the right and glue the joke onto the tab. Glue a blank piece of card to the back of the joke to strengthen.

Step 6

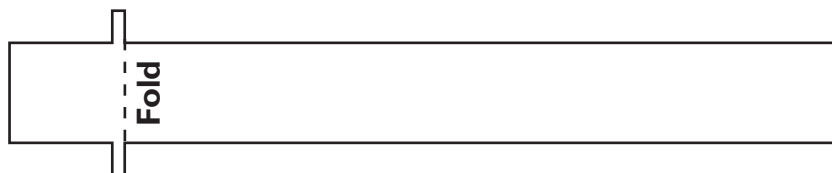
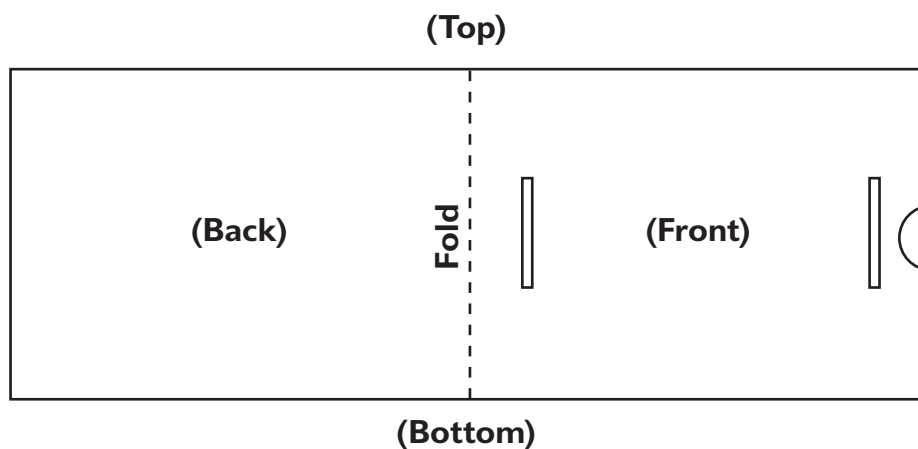
Glue the punchline onto the front of the background template so that when the longer tab is pulled it flips back the joke to reveal the punchline.



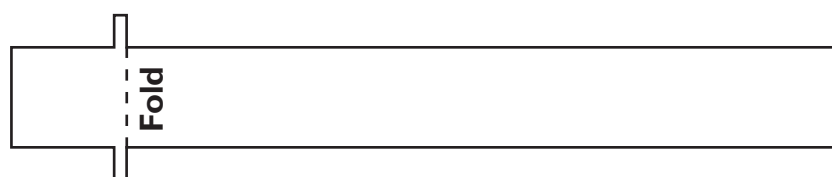
Red Nose Day crafts

Flip-flop card templates

Background template



Pull tabs



Joke template



Punchline template



Red Nose Day crafts

Sliding joke card

This challenging activity is for more able children. Supervision by a teacher or teaching assistant will be required. The activity requires the use of a craft knife.

You will need:

Photocopiable 4, 'Sliding joke card templates'; craft knife; stiff card (cereal-box thickness); paper; safety ruler; black marker pen; pen/pencil; glue; decorating materials and your best joke and punchline!

Step 1

Hand out **Photocopiable 4**, 'Sliding joke card templates'. (Note: Enlarging the templates will make it easier for children to complete the craft knife cutting steps.) Carefully cut out the front and back templates and mount each template to stiff card. Using a thick black marker pen, go over the blue slot lines on both templates.

Step 2

Print or write the joke and punchline onto two separate pieces of paper that are the same size as the green and red frames on the templates. Stick the joke into the green framed area on the front template and the punchline into the red framed area of the back template (ensure you have the back template the correct way up.) Draw or stick on any pictures. Allow to dry thoroughly.

Step 3

Trace the slot lines onto the joke and punchline using a black pen (having gone over these lines earlier with a black marker pen should make them easier to trace). Using a craft knife and safety ruler, carefully cut all the black lines on the templates. Cutting across the horizontal line along the top of the back template will create a loose 'fringe'.

Step 4

Score along the top and bottom dotted lines on the back template. You will fold these over in step 7. Use the craft knife to cut the two slots at either end of the back template.

Step 5

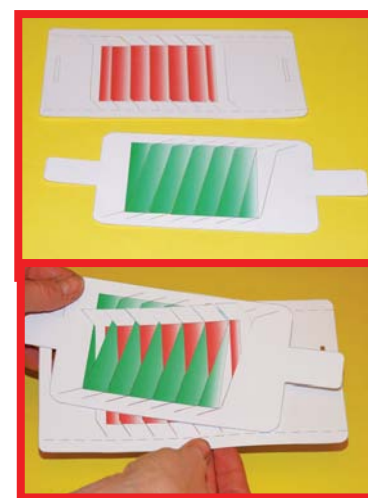
Place the front template directly over the back template. Poke the loose ends of the back template up through the front template.

Step 6

Tuck the two pull tabs either end of the front template through the corresponding slots on the back template. Ensure the left tab is sticking out more than the right tab at this stage – so you can see the joke (front template).

Step 7

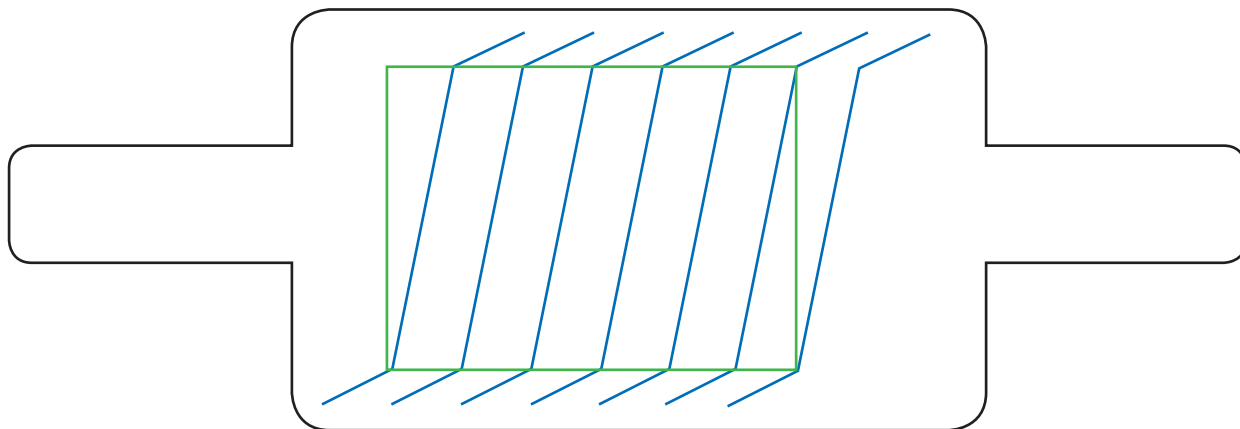
Practise pulling the tabs to reveal the joke and the punchline. If it 'sticks' ensure that there are no uncut lines or caught pieces of card. Measure and cut out a frame border from card to stick on top of the front template. Make sure you trace a 'window' so that you can see the joke/punchline. Glue the frame to the card along the top and bottom (not the sides) – within the dotted lines that you scored earlier. Fold back the dotted lines at the top and bottom to neaten and secure. Decorate the frame.



Red Nose Day crafts

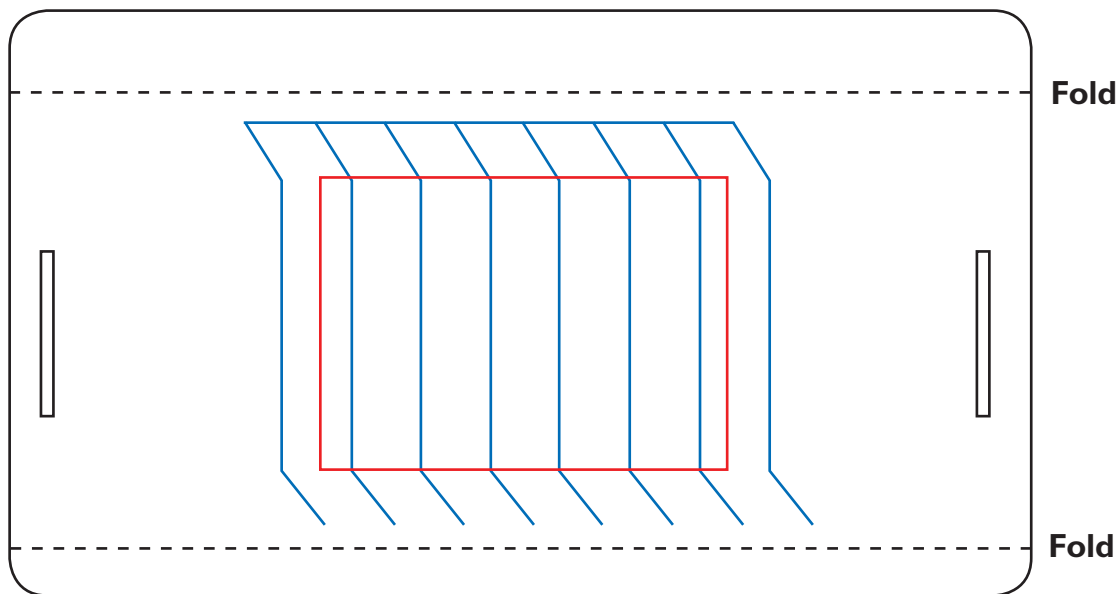
Sliding joke card templates

Front



Back

(Top)



(Bottom)